

# MQ Real-Time Quantitative PCR Machine

Cat No: QPCR-M-C6-96

**MOLEQULE-ON**<sup>®</sup>

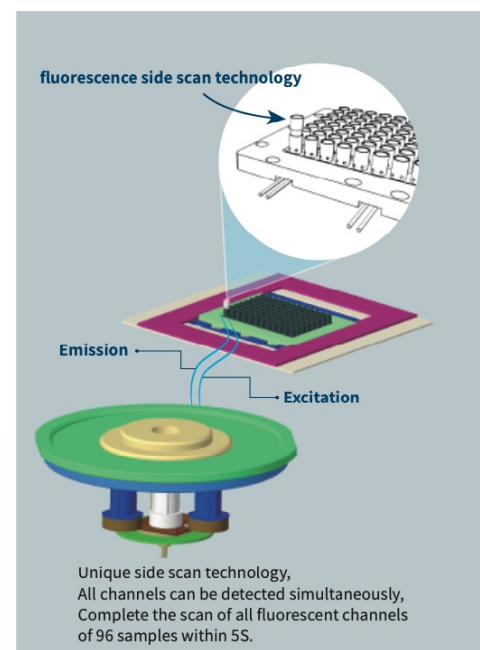


## Description

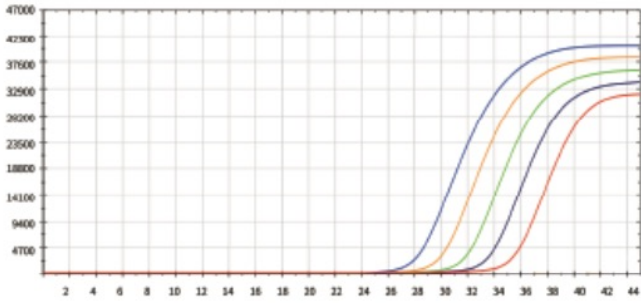
MQ Real-Time Quantitative PCR Machine is a high-throughput device which stands by the principles of high efficiency and quality. It features advanced temperature control system and optical system as well as powerful software analysis system. It can perform application such as qualitative/quantitative analysis, genotyping, allele identification, HRM, melting curve analysis and etc. The product adopts side scan technology and all channels are collected at the same time. 96 samples can be scanned within 5 seconds. This device has powerful software and hardware functions to meet the different needs.

## Features

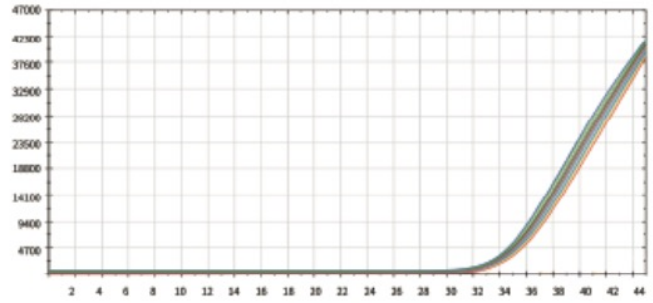
- Strong fluorescence signal, low background noise and high sensitivity.
- 96 samples 6 fluorescent channels are scanned with 5 second.
- LED light source has the advantage of energy saving, environmental protection, long service life and maintenance free.
- Automatic hot lid, which can be used with automated workstations to improve work efficiency.
- 12.1 inch LCD touchscreen, real-time monitoring of operating conditions.
- Powerful software analysis functions can perform qualitative/quantitative analysis, high-resolution melting curve, genetic typing, relative quantitative, temperature gradient function etc.



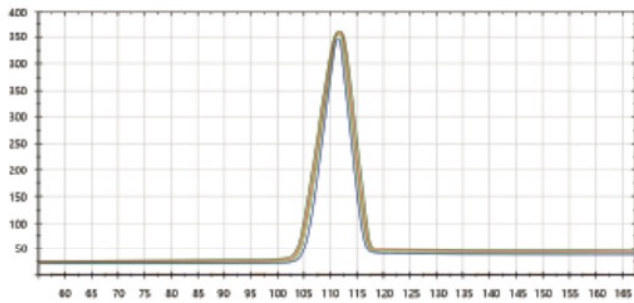
**Melting Curve**



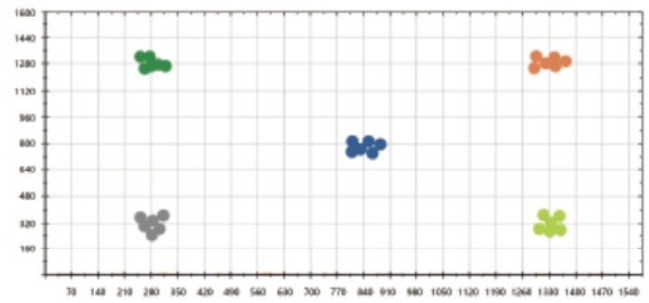
**Repeatability**



**Genotyping**



**Gradient Linear**



Research institutions and molecular clones, gene expression, and genotyping of various colleges and universities



Medical institutions perform pathogen testing, genetic screening, various infectious diseases, tumor diagnosis, etc.



Environmental testing, pesticide residues and soil testing



Detectives of various pet pathogens (such as avian influenza, foot -and -mouth disease, swine fever, etc.) and health monitoring



All kinds of food microbial detection, allergens, genetically modified food, real and false meat identification, etc.



Reagent development, verification, regeneration drugs, etc.

## Specifications

Model	QPCR-M-C6-96
Sample capacity	96 well, 12x8 strip, 96x0.2ml single tube
Consumable	0.2ml tube, 0.2ml 8-tube strips, 0.2ml 96 well plate
Reaction volume	10-100ul
Temperature range	0-100°C (Resolution: 0.1°C)
Max. Ramp rate	8.0 °C/s
Temperture control accuracy	± 0.1°C
Uniformity	± 0.2°C
Accuracy	± 0.1°C
Gradient spread	0.1-42°C
Hot lid temperature	30-110°C (adjustable, default 105°C)
Lid operation	Automatic hot lid
Temperature control	Block/Tube
Excitation wavelength	300nm – 810nm
Emission wavelength	500nm – 810nm
Detection channel	6 channels
Detection method	All channels scan at the same time
Scan period	5 seconds to complete 96 well test
Factory calibrated dyes	F1: FAM/SYBR-Green / EVA-Green, F2: HEX/VIC/JOE/TET/Yellow, F3: ROX/Texas Red, F4: Cy5, F5: Cy5.5, F6: Cy3
Excitation	Long life LED
Detection	High sensitivity photoelectric detector
Dynamic range	1-10 <sup>10</sup> copies
Sensitivity	1 copy
Feature functions	Qualitative / absolute quantification, relative quantitative, genotyping, HRM, melting curve, standard curve, allele identification, temperature gradient function etc,
Operation system	Win7, Win10, Win11
Remote monitoring	Can be connected to laboratoery management system
Automation platform	Can be used with automated workstations
Data export formats	Excel, csv, txt, pdf (report can be printed directly)
Control method	12.1 inch retractable color touch screen control or connect to computer
Communication	USB2.0, RS232
Weight & Dimensions	30Kg, 520x350x330mm (LxWxH)
Voltage & Power	100-240VAC 50-60Hz, 1500W