

# MQ Gel Imaging System

Cat No: GIS-M-6.3M

**MOLEQULE-ON**<sup>®</sup>



## Description

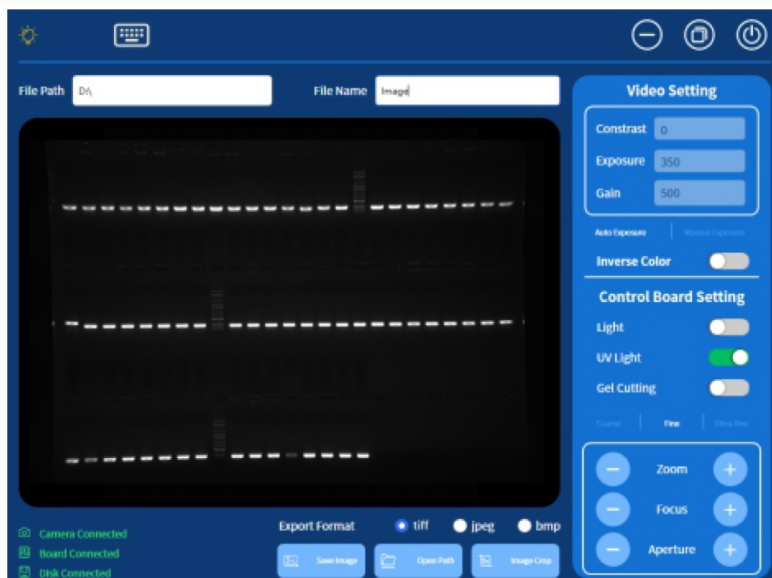
The MQ Gel Imaging System is a device for imaging gels and equipped with a high-sensitivity 6.3-megapixel camera for rapid, accurate, and high-throughput detection and imaging of samples. It is widely used in the fields of life sciences, medicine, and environmental protection. Camera is featured with electric zoom lens and offered three adjustment functions; zoom, focus and aperture with the option of coarse, fine and ultra-fine adjustment setting.

It utilizes UV LED lighting which ensures uniform illumination, reduced power consumption, minimal heat generation and a longer lifespan. The UV transilluminating stage features a clear shooting range marker that align perfectly with the camera's center. The device is equipped with a UV laser protective panel with a cut-off depth exceeding OD7.

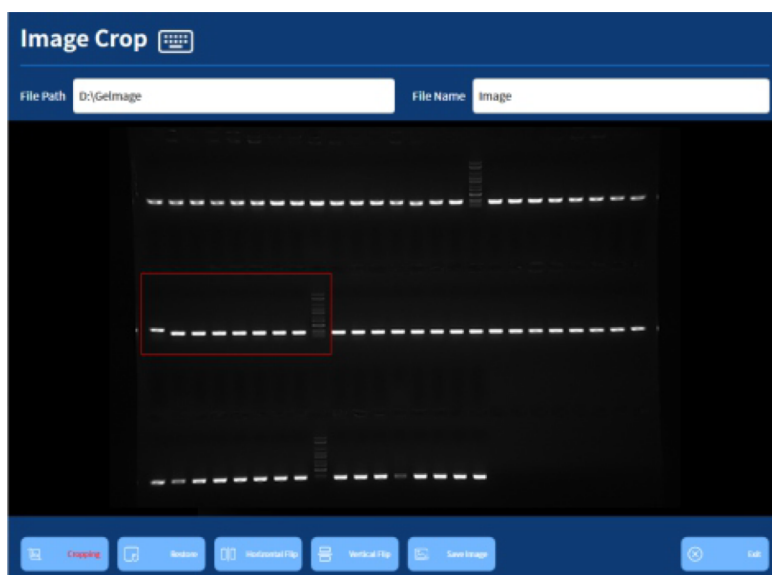
The imaging software comes with an intuitive image cropping feature for easy saving of desired bands. The equipment is used for nucleic acid gel imaging, nucleic acid gel cutting and protein gel imaging.

## Features

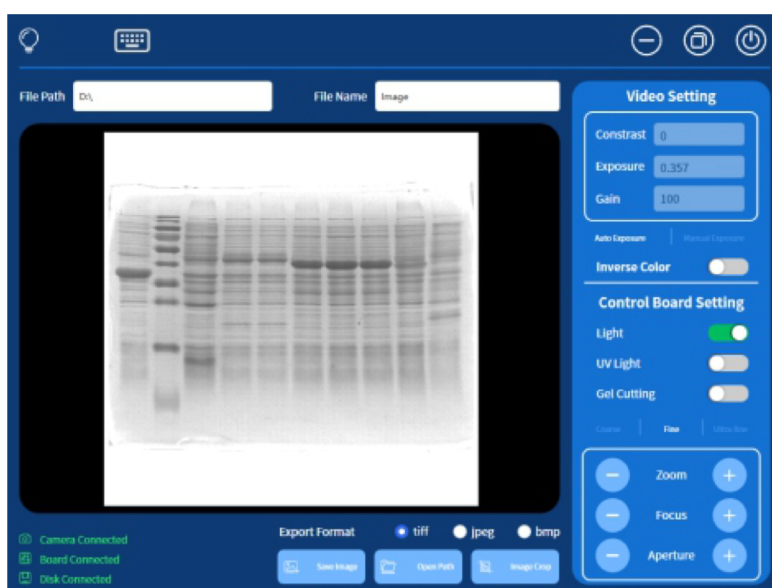
- High sensitivity camera: 3072x2048, 6.3 megapixels
- Pixel; 2.4x2.4 um
- Shooting area; 140x140mm
- Light source; Bright-field light source: Downward facing LED white light source, symmetrically distributed on both sides. UV Light Source: 310 nm LED array for uniform transmission illumination.



**Nucleic Acid Gel Capturing Setting**



**Nucleic Acid Gel Crop Setting**



**Protein Gel Capturing Setting**

## Specifications

Product Model		GIS-M-6.3M
Camera	Pixel resolution	6.3 million pixels
	Resolution	3072 x 2048
	Pixel Size	2.4 x 2.4 um
	Target Size	1/1.8" (7.37 x 4.92mm)
	Sensitivity	760 mv
	Dark Current	0.15 mV
	Signal-to-Noise Ratio	40.2 dB
	Exposure Time	17 us – 15 s
	Grey Scale	8-bits
	Camera Type	Black and White
Lens	Aperture	F1.0 – F16
	Focal Length	8 – 48 mm
	Type	Motorized Zoom Lens
	Filter	590/60nm
Light Source	Bright Field Light Source	Downward-facing LED white light source, symmetrically distributed on both sides
	UV Light Source	310nm LED array with uniform transmission illumination
Dark Box	Light Isolation	Fully light-sealed, isolates environmental light
	Door Control	Door control sensor can control the on/off of the bright field light source
	Field of View	Effective field of view is 140 × 140 mm
	Gel Cutting	After opening the door, the UV light source can be pulled out for gel cutting, in conjunction with a UV protection shield
Software Function	Camera Setting	Adjust contrast, exposure time, and gain
	Lens Adjustment	Choose adjustment range: coarse adjustment, fine adjustment, super-fine adjustment Lens: Zoom, focus, aperture adjustment
	Image Cropping	Image cropping: Crop the necessary parts of the bands
Screen		10.4 inches, 1024 × 768, Windows operating system
External Interfaces		USB 3.0x2
Operating Voltage		100-240V
Net weight		30 Kg