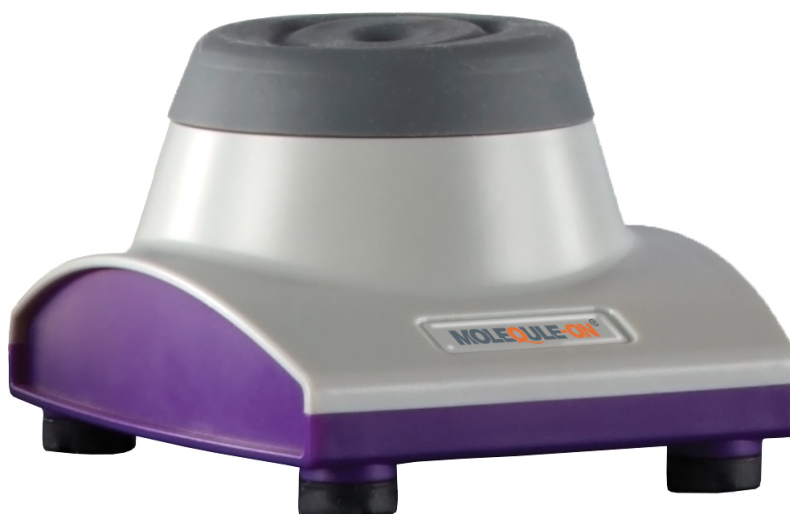


# Mini Vortex Mixer

Cat No: MVM-M-4500

**MOLEQULE-ON**<sup>®</sup>



## Description

MOLEQULE-ON introduces a Mini Vortex Mixer made for easy, fast and accurate mixing of various solutions. The Mini Vortex Mixer offers immediate vortex shaking for a variety of tube sizes. A simple, touch start operation enables exceptional mixing performance using one hand. The complete package included one Mini Vortex Mixer, two Silicone caps and one low voltage, double insulated power adapter with interchangeable plugs.

## Features

- The Mini Vortex Mixer is made from durable ABS (Acrylonitrile Butadiene Styrene) and silicone materials to resist most commonly used chemicals.
- Various tubes ranging from 2 ml to 50 ml can be used.
- Low profile design and small footprint (only 4.3" wide) save valuable space.
- Rapid vortex action saves time and enables quick mixing of samples.
- Easy one handed touch start operation and shaking stops when the tube is lifted.
- Non-slip feet ensures that the unit stays in place while mixing.
- A low activation force prevents user fatigue while performing repetitive procedures.
- Stable platform reduces the chance of dropping a sample during operation.
- Quiet operation and low vibration on the vortex machine helps users stay focused.

## Specifications

Model	MVM-M-4500
Speed	4500 rpm
Orbit	6mm
Capacity	Up to 50ml tubes
Noise level	Full speed, unloaded: 53 dB
Weight	2 lbs (0.9 kg)